

Dynatrace & Microsoft Azure: Better together

Accelerate your ACR with AI-powered observability

Dynatrace perfectly pairs with Azure to:

Streamline Azure
Monitor metrics and log data collection right in the Azure portal

Make enterprise-wide observability
as easy as one click for customers

Get end-to-end coverage
of hybrid-cloud environments

Accelerate cloud modernization
and enable customer innovation



Dynatrace + Microsoft market opportunity:

- ✓ Top Tier Global ISV
- ✓ PRACR Reporting
- ✓ Azure Native Dynatrace Service

How we're improving customer outcomes:

Faster innovation with higher quality
Dynatrace's unified platform fuels collaboration, freeing up teams' time to innovate, create, and share AI-driven solutions

Enhanced security
When customers understand their applications and infrastructure, risk is significantly reduced, proactively protecting against potential threats

Improved agility
Accelerate their migration to Azure with more confidence

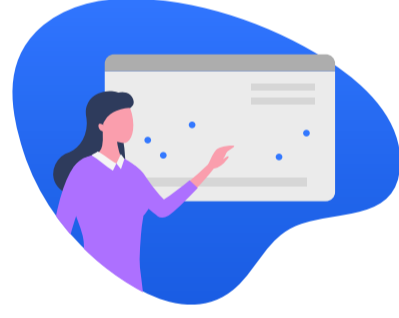
Reduced costs
Extended observability can lead to greater efficiency – improving operations, reducing MTTR, and accelerating innovation

Unparalleled value across stakeholders



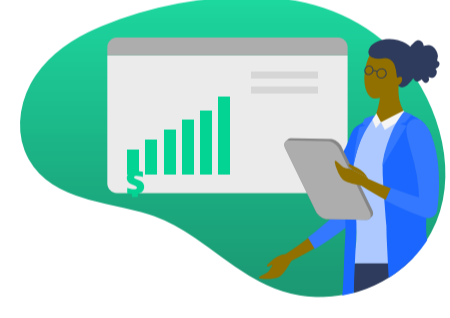
Development: Innovate faster with higher quality

- 4x** Greater innovation throughput — AGII
- 42k** More hours per year for innovation — TIAA
- 0** Major errors in post-production code — Rack Room Shoes



Operations: Operate more efficiently

- 60%** Greater operational efficiency — SAP
- 99%** Fewer support tickets — Kroger
- 80%** Faster issue resolution — Porsche Informatik



Business: Drive better business outcomes consistently

- 20%** Higher cart value — Mitchells & Butlers
- 65%** Lower customer churn — Vitality
- 32%** Increase in conversions — BT

“

The automation for deploying OneAgent and the built-in log processing will simplify getting the full power of Dynatrace assisting in our digital transformation. The integration of Dynatrace and Azure has great potential to give us a better view into our applications on Azure.

— **Bill Demsky**, Global IT Infrastructure Architect at Kelly Services

”

Dynatrace's Azure observability is:

Integrated with Microsoft Azure Marketplace. Dynatrace is native in the Azure portal, providing both commercial (MACC) and technical (streamlined onboarding and deployment) benefits to your customers.

Fully automated with AI integrated at our core. Leveraging automated intelligence and observability to visibly analyze every transaction across your customers business data to identify and resolve issues before they can impact your customers business on the smallest of levels.

Enterprise scale. Dynatrace goes beyond solving a single problem to take a holistic look at customers' entire hybrid cloud ecosystem.



Team up with Dynatrace today

Contact your Dynatrace partner team to learn more about how we can help your customers maximize their Azure cloud investment and accelerate your pipeline.

Contact us